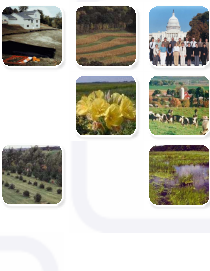


MASWCD Leadership Institute:

2007-2008



The Minnesota Association of Soil and Water Conservation Districts, in cooperation with the U of M Extension Service and the Natural Resources Conservation Service, is once again offering a leadership program for Soil and Water Conservation District personnel. The MASWCD Leadership Institute is a dynamic educational experience designed to build leadership skills of SWCD supervisors and employees.

Registration

The registration fee for the MASWCD Leadership Institute is \$1,450.

THIS FEE HAS BEEN GREATLY REDUCED DUE TO AN NRCS GRANT FOR THE PROGRAM.

The registration fee covers:

- * Tuition, speakers, and course materials;
- * Lodging and group meals for all sessions taking place in Minnesota; and
- * Lodging, airfare to and from Washington D.C. and special group meals while in the nation's Capitol.

Registrations must be received in the MASWCD office by July 13, 2007.

Program Highlights

Final schedule is subject to change.

August 21-22, 2007 - Moorhead MN

Embarking on the Leadership Adventure

Get acquainted with others, discuss your expectations for the program and explore practical and intriguing ideas about leadership.

September 18, 19, 20, 2007 - Duluth MN

Visionary & Ethical Leadership; Balancing Ethics, Economics & the Environment

Prepare yourself and others to view the organization with a sense of the "Big Picture" while at the same time maintaining effectiveness. Learn how decisions about the environment are shaped by economic limitations as well as local and global values, beliefs and ethics. Leaders in this century must develop creative ways to lead while balancing these tensions.

November 14-15, 2006 - Morton MN

Personal Leadership

Effective leaders understand their strengths and skills, as well as the strengths and skills of others. Gain insight into your strengths and preferred styles of communicating and leading, while you also learn about how to best use the preferred styles of others.

January 16-17, 2008 - Alexandria MN

Team Leadership

Working with others to accomplish mutual goals is part of leadership. Learn about your preferred team style and how to more effectively organize, communicate and address conflict when working in team situations.

March 1, 2, 3, 4, 5, 2008 - Washington D.C.

Civic Leadership

Public leadership requires building relationships and strategically bringing individuals and groups together to resolve critical issues and create effective public policy. See firsthand how these skills are used to develop public policy and legislation.

June 17-18, 2008 - Lanesboro MN

Organizational Leadership

Learn how to design a dynamic organization in this century to function effectively, build strong teams, maintain open communications and address community issues.

August 6-7, 2008 - Grand Rapids MN

Maintaining Your Leadership Momentum

This session serves to synthesize your leadership learning by reflecting on your shared experiences, extending your leadership network and challenging you to apply your leadership skills to future leadership opportunities in your organization and in the community.

Registration Form

MASWCD Leadership Institute 2007-2008

Please print or type:

Name: _____

Address: _____

City: _____

State/Zip: _____

Phone: _____

E-mail: _____

MASWCD Area (1-8): _____

SWCD: _____

I am a: supervisor* employee

Registration Fee: \$1,450 per person

Please make check out to MASWCD & mail to:

MASWCD
790 Cleveland Avenue South, Suite 201
St. Paul, MN 55116
Phone: 651-690-9028

**Registrations must be received in the
MASWCD office by July 13, 2007.**

*** Upon graduation from the program, SWCD supervisors will receive a waiver of the registration fee for the 2008 MASWCD Annual Convention, December 7-9 in St. Paul MN.**

Note: A maximum of 25 SWCD participants will be accepted for this program. Registrants will be accepted on a first-come, first-serve basis, with consideration given to MASWCD Area, so that the group includes individuals from across the state.

Why You Should Participate

- Gain an understanding of how you can influence the forces affecting conservation policy and programs in your community, state, country and world;
- Share and enlarge your visions;
- Enhance communication & networking skills;
- Increase skills & understanding to “make a difference;”
- Help shape the future of Minnesota’s environment; and
- Establish a common vision and goal(s) with fellow participants.



Space is limited, so register today!

A Program Designed to Enhance the Leadership Capacity of Minnesota’s SWCDs

There is nothing noble about being superior to some other man. The true nobility is in being superior to your previous self.

~ Hindu Proverb

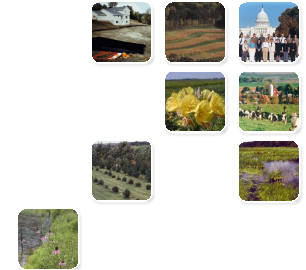
We must become the change we want to see.

~ Mahatma Gandhi

The quality of a person's life is in direct proportion to their commitment to excellence, regardless of their chosen field of endeavor.

~ Vince Lombardi

MASWCD Leadership Institute



Minnesota Association of
Soil & Water Conservation Districts
www.maswcd.org

2007-2008 Program

Sponsored by:
Minnesota Association of Soil and Water Conservation Districts (MASWCD) &
Natural Resources Conservation Service (NRCS)